



Home of:

PORSCHE
EUROPEAN OPEN

GREEN EAGLE GOLF COURSES

365 days of golf · excellent quality of course maintenance · unique ambience



WELCOME

to Green Eagle Golf Courses!

The 42-hole golf course is located just outside the Hanseatic City of Hamburg. International golf professionals as well as amateurs and beginners appreciate the golf club's modern and progressive golf philosophy that has been pursued since its foundation in 1997.

The North Course has from the beginning been designed as a potential venue for international major events. This is why Green Eagle Golf Courses is looking forward to hosting the Porsche European Open and welcoming professional golf in the Hamburg area in the next few years.

Golf is our passion.



North Course, Green 17

EVERYTHING STARTED WITH A VISION

Green Eagle Golf Courses was founded in 1997 by Michael Blesch (PGA golf professional) and Ralf Lühmann at the age of 26. It all started with courage and a new concept.

Today's golf course extends across 186 hectares and includes the 18-hole North Course, the 18-hole South Course and a public 6-hole Par 3 Course for all playing abilities and the largest driving range in Northern Germany. Thanks to various possibilities and large practice areas there are no limits regarding your practice. We offer a unique golf experience that has been designed for players of all levels and features 42 diverse holes so you can experience unforgettable moments. Besides an exceptional design and an outstanding quality of maintenance on our three courses, we also set new standards in terms of clubhouse atmosphere and ambience. Allow yourself to be charmed and be our guest!

Have a great game!

Yours,
Ralf Lühmann & Michael Blesch

CHRONICLES

1997

Foundation under the name of Michael Blesch and Ralf Lühmann Golfplatzplanung GbR

1999

Opening of the driving range and the first nine holes of the South Course

2000

Opening of all 18 holes of the South Course

2006

Opening of the first nine holes of the North Course as well as opening of the 6-hole Par 3 Course

2007

Opening of the clubhouse and its restaurant with a spacious lakeside terrace and artificially created beach

2008

Opening of all 18 holes of the North Course

2013

Extension of the North Course by a fourth blue tee on all 18 holes

2014

Opening of the Halfway House on the North Course

2016

Redesign of some North Course greens and bunkers in preparation for the European Tour



NORTH COURSE

Our North Course is just the right place for everyone who wants to play tour-level golf. Measuring 7,165 meters from the championship tees it is one of the ten longest courses in the world. The North Course is a masterpiece of design and care, making it a real challenge for every golf player. Our fairways are considered some of the best in Europe.

The North Course was opened in 2008 after four years of construction and has established itself in professional golf over the last years. We gained a lot of experience through the organization of international tournaments. This experience is used to further develop the entire golf course and the North Course in particular.



North Course, Green 18



North Course, Green 17

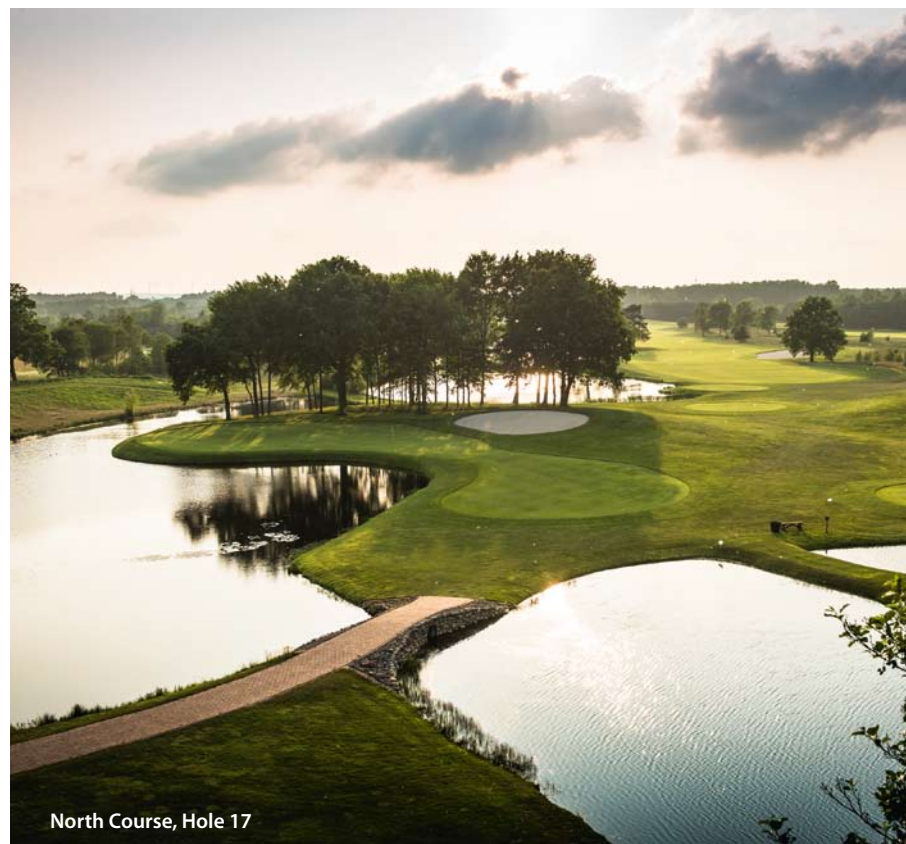




NORTH COURSE

The North Course extends across 86 hectares and has been designed to fulfill the requirements of international professional tournaments from the beginning.

Four tees are available at each hole, offering the appropriate challenge for all playing abilities. According to the DGV's course rating, the North Course is the most difficult one from the championship tees in Germany. The fairway bunkers are located between 240 and 320 meters from the championship tees and therefore within the drive distance of international golf professionals.



North Course, Hole 17



North Course, Hole 3



North Course, Tee 10



North Course, Hole 16



NORTH COURSE

Strongly undulated greens represent another challenge. The greens are fast and true and a sensational putt of 50 meters in length over three waves might be possible.

Bent grass has been used exclusively for the North Course's fairways. A two-row sprinkler system ensures that the grass is adequately hydrated during drier periods as well. The semi-rough's dark green seed mixture and the bunker's white crushed granite create a unique play of colors. Besides the lengths and greens, water is one of the biggest challenges of the North Course. The overall water area is 15 hectares. 17 of the 18 holes include water hazards that partly line the holes from the tee and along the beautiful fairways to the green. Strategically placed greenside bunkers in order to challenge each player at the highest level.

SOUTH COURSE

It all started with the South Course's groundbreaking ceremony that took place almost 20 years ago. The attractive and very popular South Course is more than 6,000 meters long and playable all year round due to perfect ground conditions – even during heavy rain. Many natural ponds and

an old tree population add to a park-like character. Nature lovers will find the South Course particularly beautiful in the early morning hours as many rare birds have found a new home around the South Course. Evolved landscapes and areas of water provide relaxation.



South Course, Green 12



South Course, Green 2





PAR 3 COURSE

The public Par 3 Course has six holes ranging from 60 to 151 meters in length and is accessible to everyone with no membership or proficiency certificate needed. Water hazards and bunkers are also integrated into the layout as it is the case for the larger 18-hole courses. Beginners value the six-hole option as it is a popular and reasonable preparation to obtain a proficiency certificate and a perfect, non-binding possibility to get to know the fascinating world of golf. Just buy a day ticket at the office and play as often as you like.



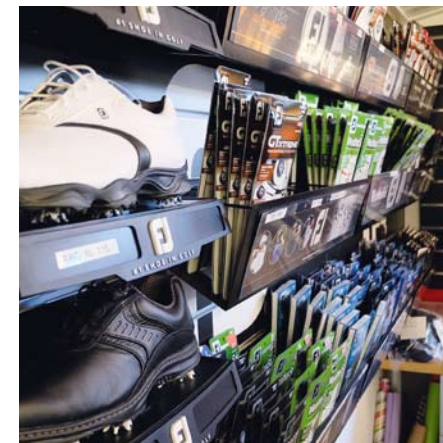
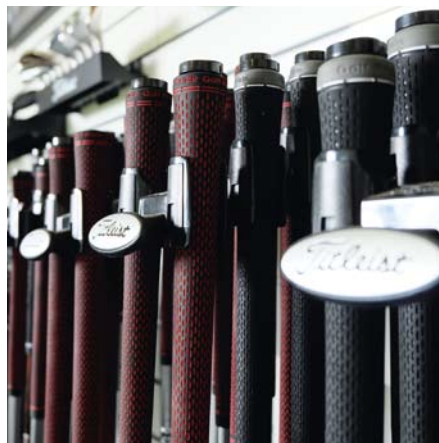
DRIVING RANGE

Green Eagle offers a practice area that is unique in Northern Germany as it extends across an overall area of four hectares. The driving range alone sets new standards with more than 200 teeing grounds (17 of them are roofed). Additionally, three putting greens, two chipping greens and one pitching green offer varied practice possibilities for nearly every game situation. Our golf experts are there to provide assistance and will also analyze your swing through video analysis if requested.



PRACTICE AND FITTING

In addition to professional golf lessons, "custom fitting" represents another option to improve your golf game. "TrackMan" measures all important data on the driving range, e.g. swing and ball speed, spin, smash factor, launch angle, total distance and lateral deviation as well as precision. Your golf instructor will complement the measurement data by surveying your posture, golf swing, ball impact and the ball's trajectory in order to find the ideal club for you including all specifications. Optimize your game and make an appointment.



GREEN EAGLE PRO SHOP

For many years, we have been offering competent advice and a comprehensive range of golf clubs, gloves, balls, bags, trolleys, shoes, accessories, gifts and the latest golf fashion at our Pro Shop. You can also order individually printed golf balls and products that are temporarily out of stock. Of course you can always benefit from attractive offers of leading brands and a wide range of demo clubs. Please do not hesitate to contact us if repairs or modifications like shaft extension or grip change are needed.

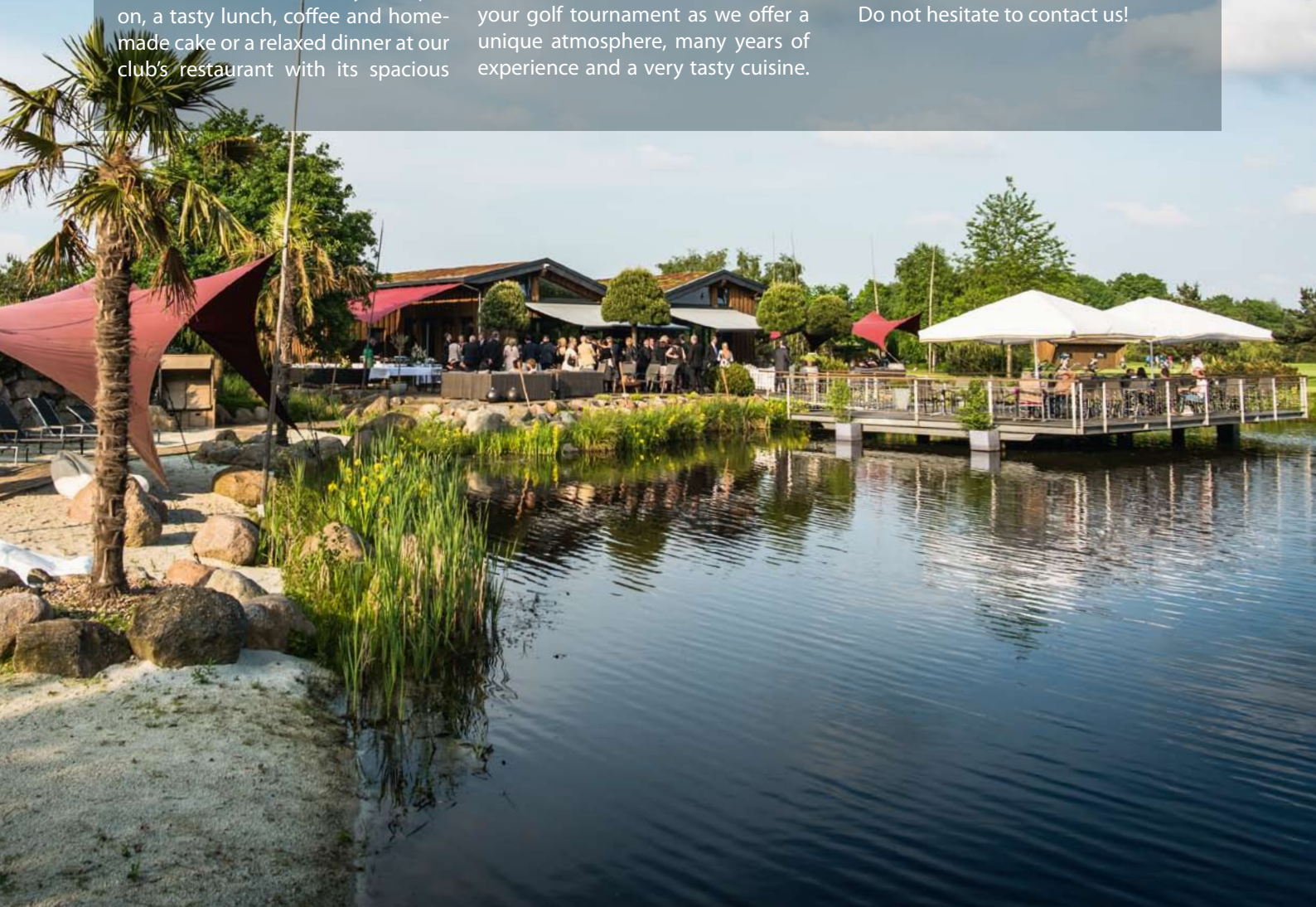
RESTAURANT BEACH

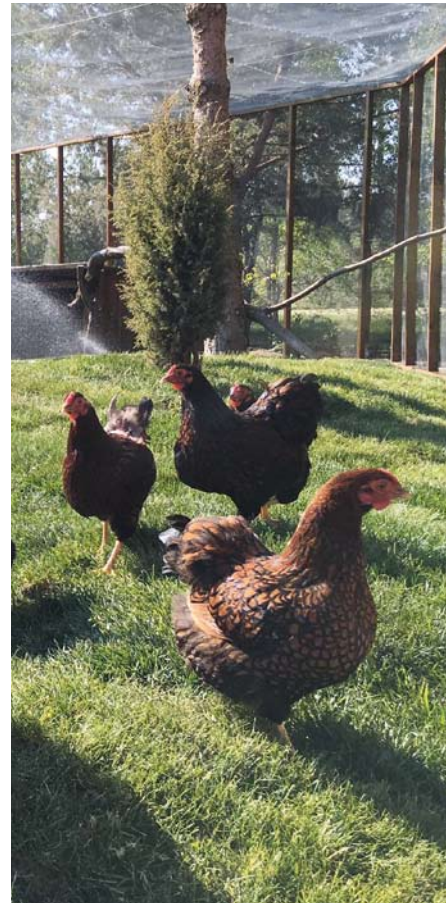
Our catering crew is looking forward to welcoming YOU every day of the week during the season! Even if you are not a golf player you can enjoy a delicious breakfast at your option, a tasty lunch, coffee and home-made cake or a relaxed dinner at our club's restaurant with its spacious

lakeside terrace. You can also relax at our "beach" next to the pond of the South Course's 18th green. It's the perfect place to unwind on a lounge chair after a round of golf or to let the day end with an after work drink! Besides sporting challenges, beautiful nature, relaxation and fun on our two excellent 18-hole courses, Green Eagle Golf Courses represents the optimal venue for your golf tournament as we offer a unique atmosphere, many years of experience and a very tasty cuisine.

Furthermore, you can also use our Halfway House with its stunning view over the North Course as a modern event location. Hold a meeting, have a gourmet breakfast, a barbecue, a wine tasting or celebrate your birthday with friends – right on the golf course! We would be glad to make a customized offer according to your wishes.

Do not hesitate to contact us!





GREEN EAGLE NATURE

Heaven is green – not only on the course but on your plate as well.

We are delighted to have launched our new project at the beginning of the season 2016: We are now offering our guests tasty naturalness within the framework of our “Green Eagle Nature Projects” philosophy. We want to serve delicious meals and turn sustainable food into something natural for you at the same time! This is why we guarantee you that all meals with the “Green Eagle Nature” seal are prepared with ingredients from near-natural animal husbandry and regional or sustainable cultivation.



SPECIALLY BREWED FOR US!

The first beer before a round is called “Swing Oil” in golf jargon. If this really adds to a better score... you will have to find out for yourself. But we liked the name so much that we decided to take it over for our new beer. Our “Swing Oil” beer is passionately brewed in the small “Brauerei Bleckede” in the heart of the Elbtalau. Only the best natural ingredients like high-quality malt, aroma hop and regional water are used. Don’t miss out on this amazing taste experience...

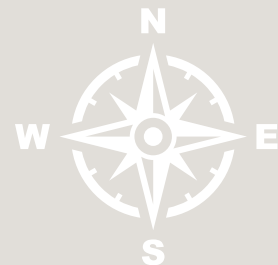
So fresh, so regional, so delicious!



NORTH COURSE

Par 73

Herren/Mens	(white Tees)
7.165 m	CR 78,4
Slope	149
Herren/Mens	(yellow Tees)
6.632 m	CR 76,0
Slope	137
Herren/Mens	(blue Tees)
5.983 m	CR 72,2
Slope	130
Damen/Ladies	(blue Tees)
5.983 m	CR 78,7
Slope	145
Damen/Ladies	(red Tees)
5.383 m	CR 74,8
Slope	135



NORTH COURSE



PAR 3 COURSE

Par 18

629 m (green Tees)

SOUTH COURSE

Par 72

Herren/Mens	(yellow Tees)
6.033 m	CR 73,3
Slope	135
Damen/Ladies	(red Tees)
5.183 m	CR 74,4
Slope	130

PAR 3 COURSE

DRIVING RANGE

SOUTH COURSE





Green Eagle Golf Courses

Radbrucher Straße 200 · 21423 Winsen/Luhe · Germany

Phone: +49 (0) 41 71 / 78 22 41 · Fax: +49 (0) 41 71 / 78 22 42

www.greeneagle.de

